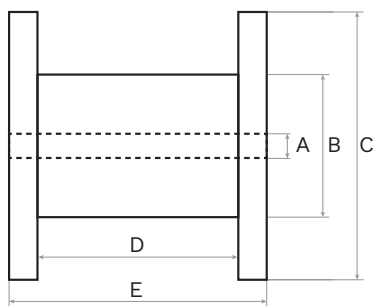










## SCHEDE TECNICHE MATERIALI

### BOBINE MADERA



Tipo di bobina	A	B	C	D	E	Peso Max
 DIN 125	16/20	80	125	100	125	3/4 Kg
 DIN 160	22	100	160	127/128	160	5/7 Kg
 DIN 200	22	125/150	200	150/160	200	10/15 Kg
 DIN 250	22	150/160	250	150/160	200	15/25 Kg
 DIN 335	35/38	224/244	355	150/160	195/200	35/40 Kg
 SH 390	305	85/90	382/390	78/82	308/310	15/20 Kg
 SH 460	305	105	460	92	315/320	34/35 Kg
 B760	41/43	430	760	266	300/306	200/400 Kg